

Uplyme Miscellany

Compiled by Graham Davies, 2019



Parish of Uplyme c1800

The glebe is 35 acres, and the Rectory House is a handsome residence, which was enlarged and much improved in 1838, when the tithes were commuted for £461 5s per annum. The church (St Peter & St Paul) is an ancient structure with a remarkably low tower. The Methodists and the Baptists have chapels here. In this parish was born the skilful geographer, Nathaniel Carpenter, who published several learned works.

White's Gazetteer and Directory of Devon 1850

The parish of Uplyme comprises 1057 inhabitants and 3149 acres of land. The manor of Uplyme was anciently held by Glastonbury Abbey, and afterwards passed to the Drake and Tucker families. The Hon Sir John Talbot, Admiral of the Blue, is now Lord of the Manor, and owner of a great part of the parish. He has a handsome seat called Rhode Hill House. Robert Bourcher Wrey Esq of Ware House, James Davidson Esq, and the Rev C W Ethelston MA., have estates in the parish. The latter is also patron and incumbent of the rectory.



Lyme Road 1850s

SALE OF ETHELSTON'S WINES - Messrs James Hussey and Son are favoured with instructions to sell by Auction, at the Rectory, Uplyme, Devon, the latter part of February, the entire cellar of first-class Wines, late the property of the Rev C W Ethelston, deceased, consisting of about 320 dozen of rare old port, sherry, Madeira and light wines, particulars of which will appear in future advertisements.

Exeter & Plymouth Gazette, January 24, 1873

SCHOOL INSPECTION – The children attending Mrs Ethelston's school were examined in religious knowledge on Tuesday, by the Rev R. J. E Boggis, senior inspector of the Diocese of Devon. There were 94 children present. At the close of the examination the inspector expressed his satisfaction at the manner in which the children had answered ...

Bridport News, May 16, 1890

The Rev H. T. Tucker, to the Rectory of Uplyme, Devon, void by the resignation of the Rev R. Lewis.

Oxford Journal, December 13, 1823



Friday evening at Mr Wm. Fowler's Lime-kilns, near Up-Lyme, four of his workmen were killed by the noxious effluvia of the kiln

Bath Chronicle & Weekly Gazette, August 13, 1812

FIRE AT TALBOT ARMS – As exclusively reported in our late editions yesterday, the Talbot Arms Hotel, Uplyme, near Lyme Regis, was destroyed by fire in the early hours of the morning. The garage of the hotel was burned down last week, when, it will be remembered, the hotel was saved largely through beer and cider being poured on the flames.

The occupants – Mr Frederick Tomlin, the licensee, his wife, son and daughter, and two visitors – were awakened about 2 o'clock by a crackling noise, and had just time to escape in their night attire before the flames, leaping from the basement, involved the building. They had to leave all their belongings behind, and these were destroyed. The Axminster Fire Brigade were called, and, in view of the danger of three cottages near by being involved, the Exeter Fire Brigade were summoned by telephone. Within 45 minutes of receiving the call the Brigade were on the scene, under Superintendent Pett. The damage is estimated at about £3,000. Both the licensee and owners of the property are insured. A theory of the outbreak is that an oak beam had smouldered since the previous fire.

Devon & Exeter Gazette, July 3, 1926

FARMING DOWN THE LIM VALLEY



▼ CECIL TURNER - farmer of this parish

AFTER months of research Lyme Regis Museum will be holding a special exhibition, "Farming in the Lim Valley" at Uplyme Village Hall, from Thursday, May 29th until Saturday, May 31st.

The large exhibition includes photographs, maps, documents and words about the history of farms in the Lyme Regis and Uplyme area over the last 150-plus years. There will also be a photographic record of Shapwick Grange's

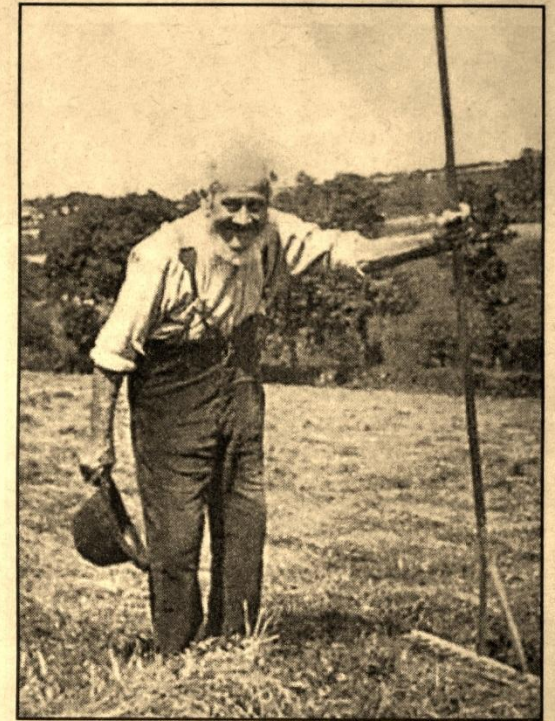
changing seasonal activities in 2007.

The exhibition is filled with farming history, organised by local volunteers at the museum, Graham Davies and Ken Gollop, who have acquired much of the material by going into the farming community, past and present.

Ken Gollop has been a stalwart at the museum for many years, being a trustee volunteer, and Graham Davies has been at the museum for the last three years as a volunteer researcher.

Sixty farms and small-holdings have been discovered to date, many of which are described in the exhibition, and 2,000 photographs, documents and maps have been copied – a selection from which will occupy over 70 display boards.

The exhibition is open Thursday 11am to 5pm, Friday 10am to 8pm and Saturday 10am to 4pm.



▼ HENRY TRIVETT - liked posing for the camera.



▼ FARMING families helping each other at haymaking



▼ WORKING horses pulling a Devon ship wagon at Pinhay

Farming in the Lim Valley

Uplyme Village Hall, 2008

Over 1000 people attended the 3-day exhibition.

www.lymeregismuseumresearchteam.co.uk/farming



Dancing until 4 am!



Elsie & Flossie Moss - Cathole farm 1918

UPLYME UNITED FRIENDLY SOCIETIES.

The Annual Fete Committee will hold an

INVITATION DANCE

*in the UPLYME SCHOOLROOM on Friday,
January 22nd., 1909, when the pleasure of
The Misses E. & F. Moss.*

company will be highly esteemed.

Tickets 1s. each, to be obtained at the doors by Invitation holders only.

Dancing from 8 p.m. to 4 a.m.

M.C's.—Mr. E. Larcombe, and Mr. J. Hiscock. Light Refreshments
will be supplied at moderate charges.

Caterer—Mr. G. Selway, Talbot Arms Hotel. N.B.—The Committee
respectfully requests that this Card be produced at the doors.

Turner, Typ.] EDGAR THOMAS, Hon. Sec.

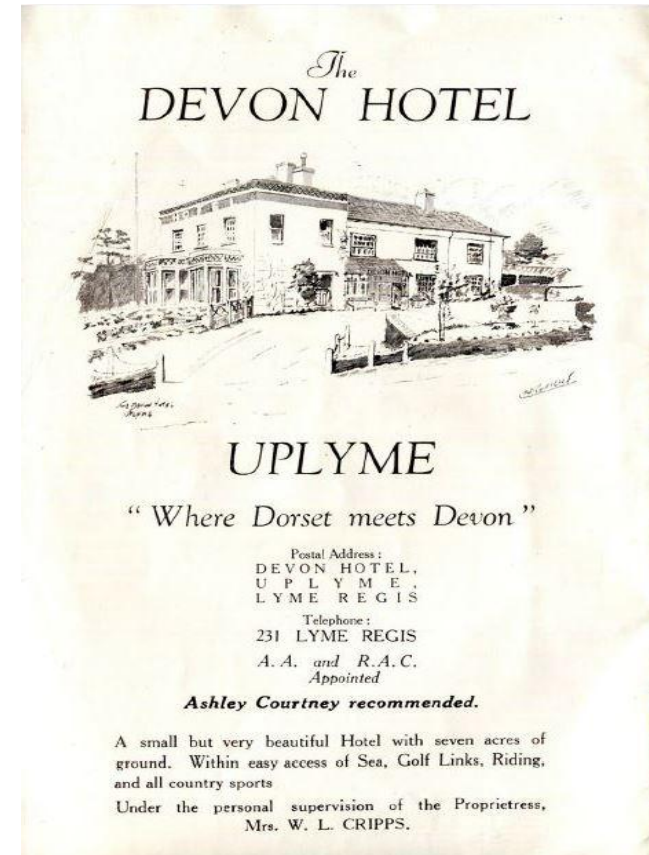
The Old Rectory, Uplyme



The rectory was 'enlarged and much improved' in 1838. It had 27 rooms, not including scullery, lobby, closet and bathroom.

On the 31st March, 1901, the household comprised the incumbent rector, Rev A W Parke, his wife, son and daughter, two visitors, a governess, cook and three maids. There would have been further staff, such as gardeners, who lived in the village.

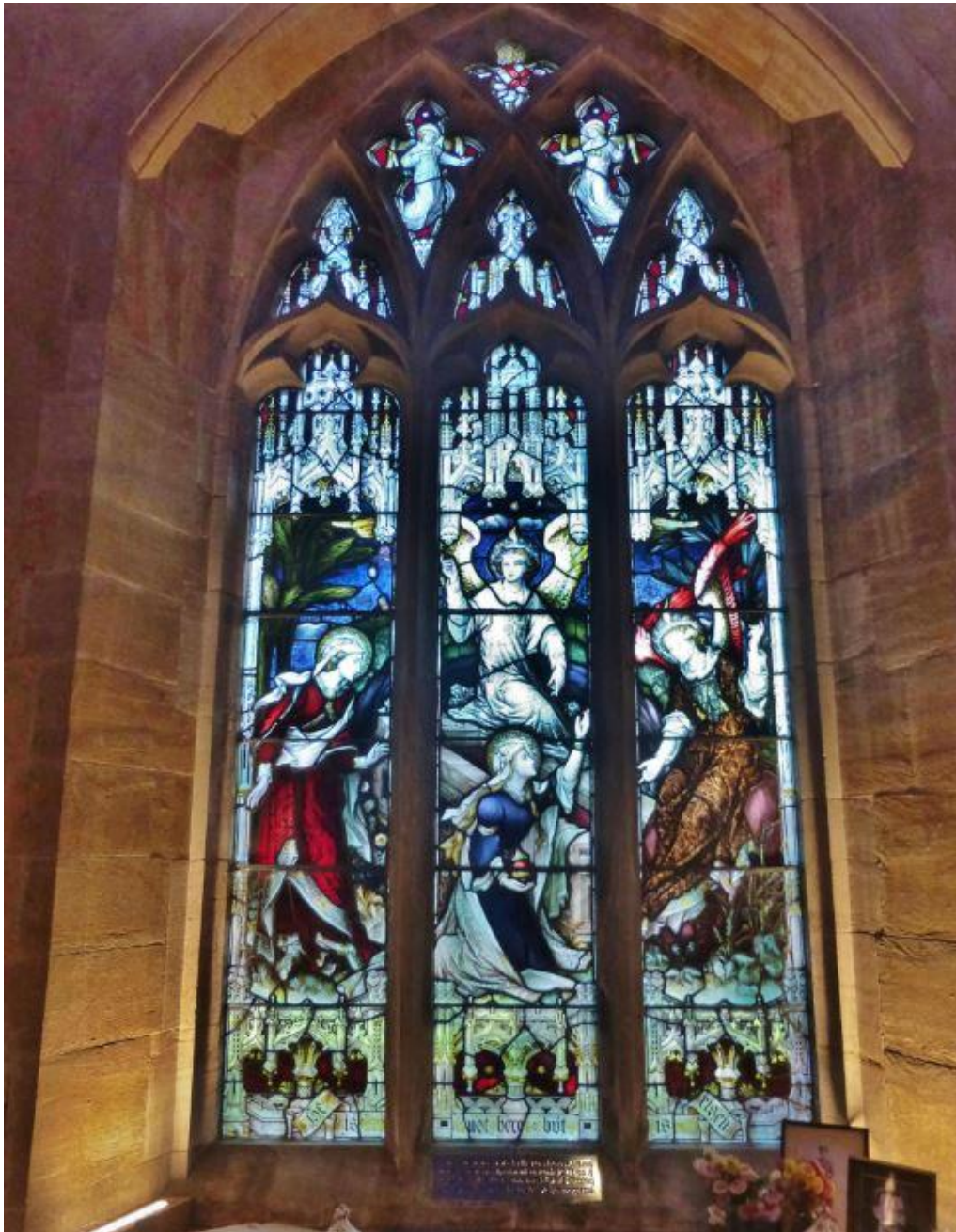
The Rev J H Scott was the last rector to live in this building (1927-1934).



The 'Old Rectory', including outbuildings and gardens amounting to eight acres, was sold by auction on February 22, 1935, at the Talbot Arms, for £2,350 to Mr C Stapleforth of the Queen's Arms, Charmouth.

It became the Devon Hotel.

A new rectory was built in Rhode Lane in 1936-37.



Memorial to the late Lieut. A W Parke at Uplyme

A memorial was erected to the late Lieut. A. W. Parke, R.N., at Uplyme Parish Church on Tuesday. The late lieutenant, it will be remembered, was a naval aviator, regarded as the finest pilot in the Corps, and he met his death through the collapse of a monoplane when flying near Wembley in December. He was the second son of the Rev. A. W. Parke (Vicar of Uplyme).

The memorial takes the form of a handsome stained-glass window, having as its subject, "The Resurrection." The service was largely attended. The Archdeacon, in the course of his sermon, said the deceased did his duty to his country and his God. He (the Archdeacon) wanted them to think, as they looked at the colours which came through the window, how they thought of God's light, power and graces, which shone out in human character. They could all in their own time and way reflect something of the graces that God gave them in their lives, whether it was by mental courage, devotion to duty, or readiness to give their life for a purpose which they believed to be right. The Archdeacon then read the dedicatory prayers and unveiled the window, beneath which a brass tablet bears the following inscription:

"This window was erected by the parishioners in the memory of Lieut. W. Parke, R.N., son of the Rector of this parish, who was killed at Wembley, December 15th, 1912, aged 23, by a fall of his aeroplane."

An impressive service concluded with the singing of the hymn, "Through the night of doubt and sorrow."

The Western Times, August 1st, 1913



An Enquiry into Uplyme Charities – 1909

In 1874 the late Mr William Frodsham left to the Rector and churchwardens 150 Great Eastern Railway stock on trust, the dividend to be applied at Christmas for the benefit of the poor. The Rev A W Parke stated that the income was used for the Coal and Clothing Clubs of the parish.

The *Firbanks Charity* - In her will of 1887, Mrs Ann Firbanks left £200 on trust to the Rector, to be invested, the dividends to be used to keep in repair the tomb of her late husband and herself, the balance to be applied for the benefit of the poor. The Commissioner, Mr Phillimore stated that it was not in accordance with the law to leave money for the upkeep of tombs; the income was now devoted to the poor.

The *Dame Augusta Baker's Charity* – In 1894, Lady Augusta Baker gave to the Rector £1,500 in trust to be invested, and the income applied towards paying the salary of a trained nurse for the poor.

The Rev Parke said that the present school was conveyed to the Rector by Mr Ethelston, who, in 1854, gave a rent charge on Court Hall farm of £80 a year, £60 of which was to go to the endowment of the school, £4 for the repair of the school and insurance, £10 for blankets or articles of clothing, £5 for the organ and the rest for the choir.

On the 1st May 1891, the Rector received from Miss Matthews, on behalf of Miss Symes, the sum of £20 to be applied to the Coal and Clothing Clubs at his discretion.

UPLYME MAN SERVES AT TRAFALGAR

Stephen Fowler, who was born in Uplyme, served as a marine on the *HMS Orion* at the battle of Trafalgar in October 1805, where, with *Ajax*, she forced the surrender of the French 74-gun ship *Intrepide*.

Later, in the early 1840s, we discover him living with his wife Ann, at Hoyton, Uplyme, farming a few acres as a tenant of Admiral Sir John Talbot. In 1851 he is living off his naval pension as a pensioner Greenwich seaman.





BATE & SON'S
Pure  
Table Waters

— The —
YAWL MINERAL WATER WORKS,
UPLYME, LYME REGIS.

Makers of Pure Mineral Waters from the
celebrated Yawl Spring Water.

In Syphons, Patent Globe Stoppers, and Crown Cork
Bottles.

Harold Bate set up his works at Yawl House in 1896.
By 1923 the works had been bought by Horace Jewell who
continued despite selling rights to the water to Axminster
RDC for public supply in the late 1920s, although the
factory did not close until 1938.



Farming at Shapwick Grange in 2007



Miss P. Fenner-Kerr.

18, Coleheime Court, S. Kensington, S.W.5

4/3/39

5/3/39

An exceedingly happy + jolly holiday, dying to
come again!
Mrs E. Fenner-Kerr

March 30th
1939

May 16th
1939

I go regrettably away, after 6½ happy weeks,
and hope soon to return, to Mrs Caunces
peace & comfort.

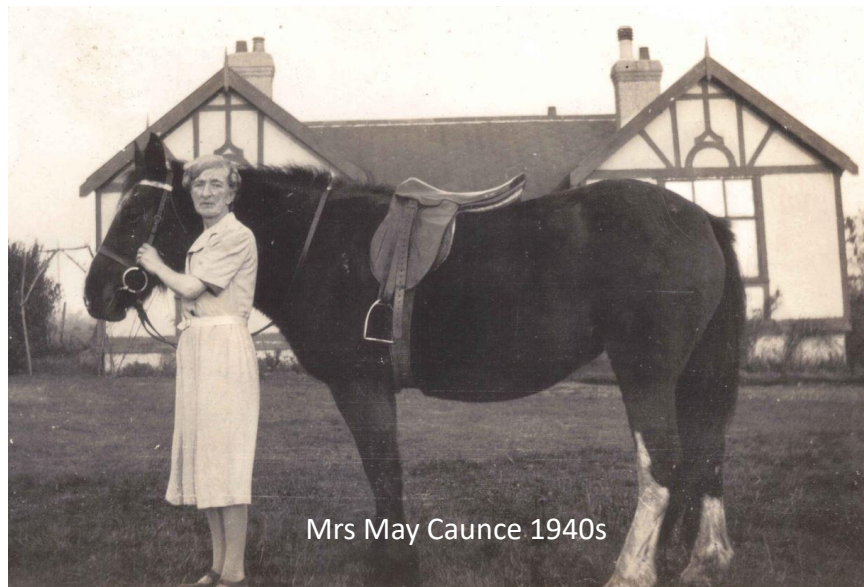
Haven of

Extracts from Hunters Cross Farm's visitors book

1937-1959

Except for prickles in the bed,
and bathing costumes stitched,
likewise hijjamas, and
digging up the kitchen garden,
we had a wonderfully happy time.

I have enjoyed my stay
at Hunters Cross Farm,
just as much as I did
last year; in fact even
better. Thanks to
Mrs Caunce (and her
lovely cooking), and
to Violet & Horace; not
forgetting Bo-Peep.



Mrs May Caunce 1940s

Many thanks for a
wonderful weeks
holiday, + for the use of
the Mare. Comeing again.

Our fifth visit

!!!!!!!

For 20 years people have come to Hunters Cross - &
been conquered by the Caunces. What can we
possibly say that has not been put more eloquently
before? It has been a perfect holiday for all of us

School of Domestic Science

Winifred, wife of Capt. Francis James Francillon, opened her School of Domestic Science at Harcombe House, Uplyme in 1919. In her youth Winifred Gordon reluctantly went to the Gloucester School of Domestic Science, but it was there that she discovered her life-long interest in cooking.

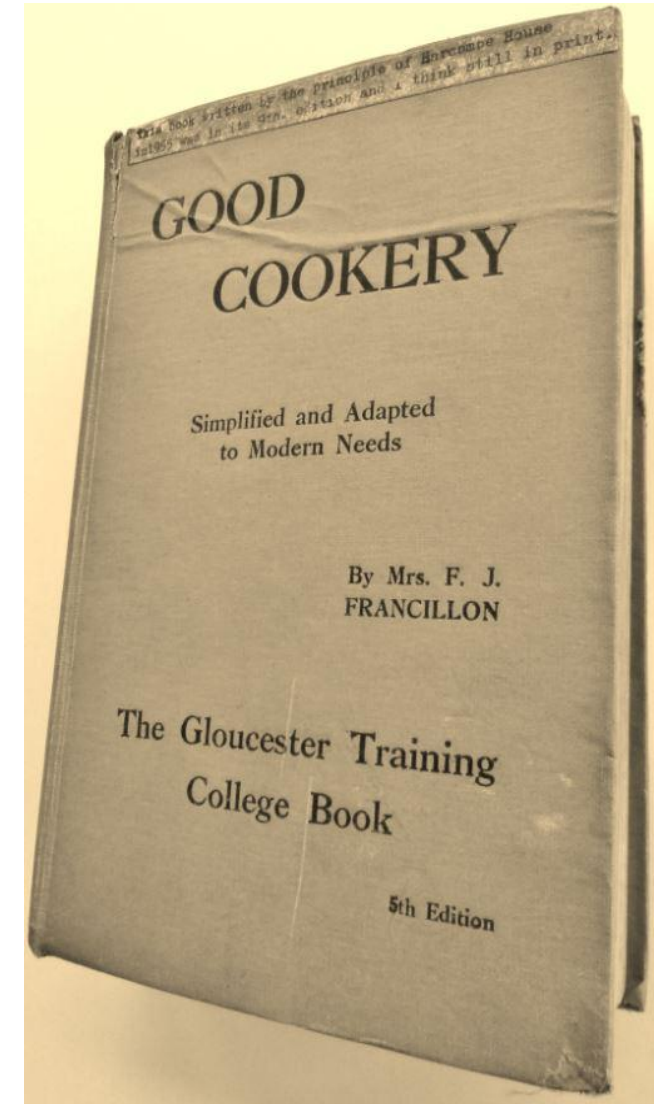
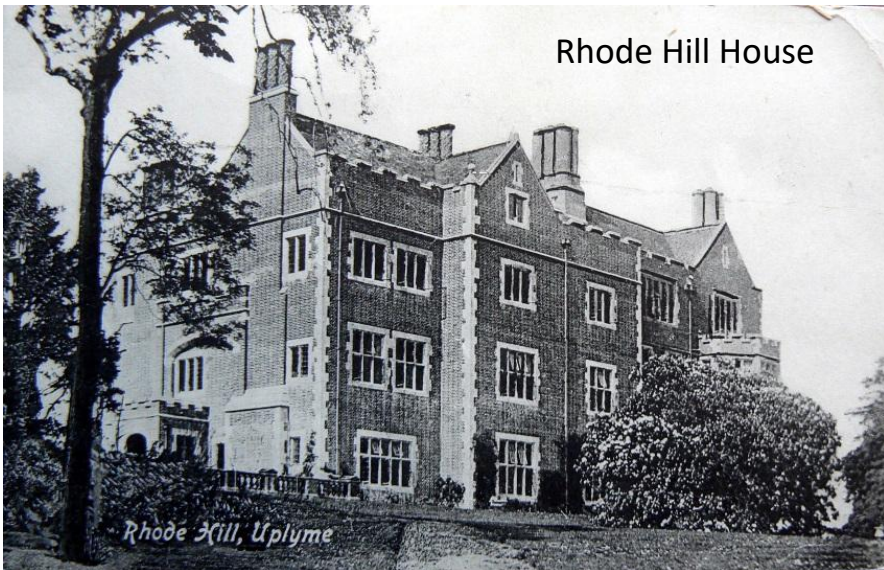
After several years of cooking high-class dinners, at the same time teaching both mistresses and their cooks, *“some of my friends insisted that I should take their daughters and train them, in my own home, and from this small beginning a School of Cookery here at Harcombe has evolved.”*



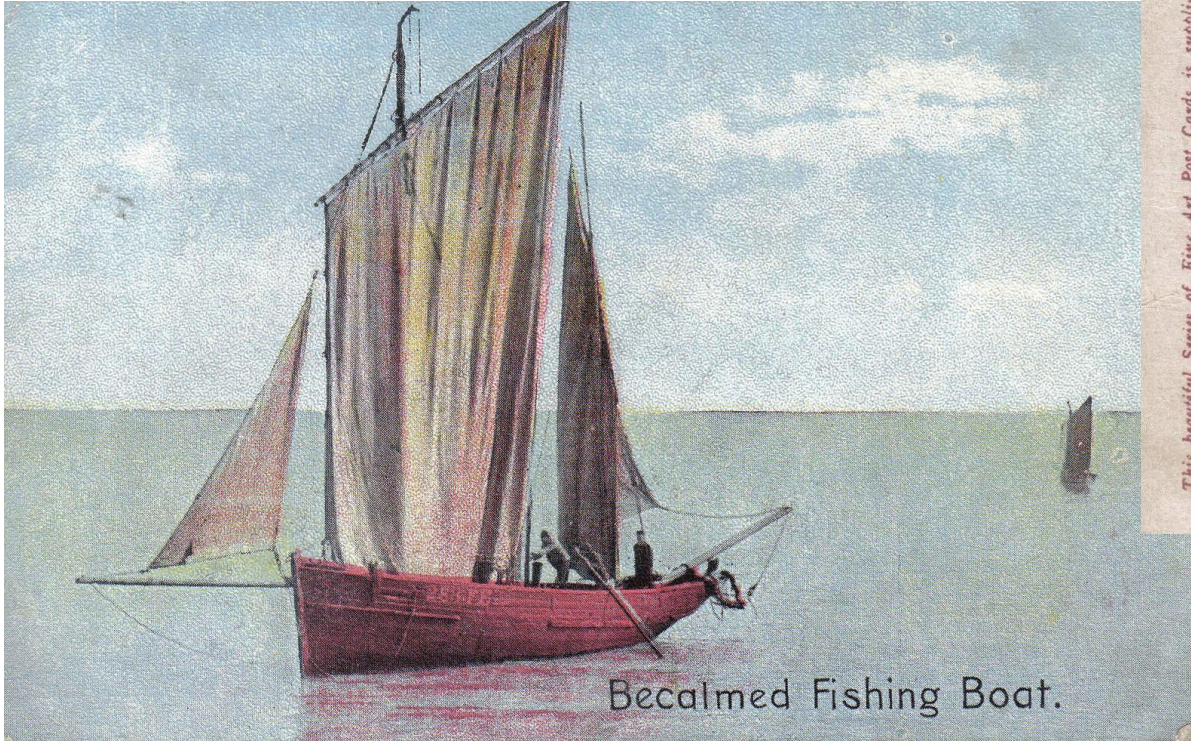
Mrs Francillon’s School at Harcombe House was sometimes referred to as a finishing school for young ladies. It taught cooking and housecraft. The course lasted 12 months and all the girls were boarders.

After WWII the school continued at Rhode Hill House, under the management of Miss Monica Wood, until it closed in 1968

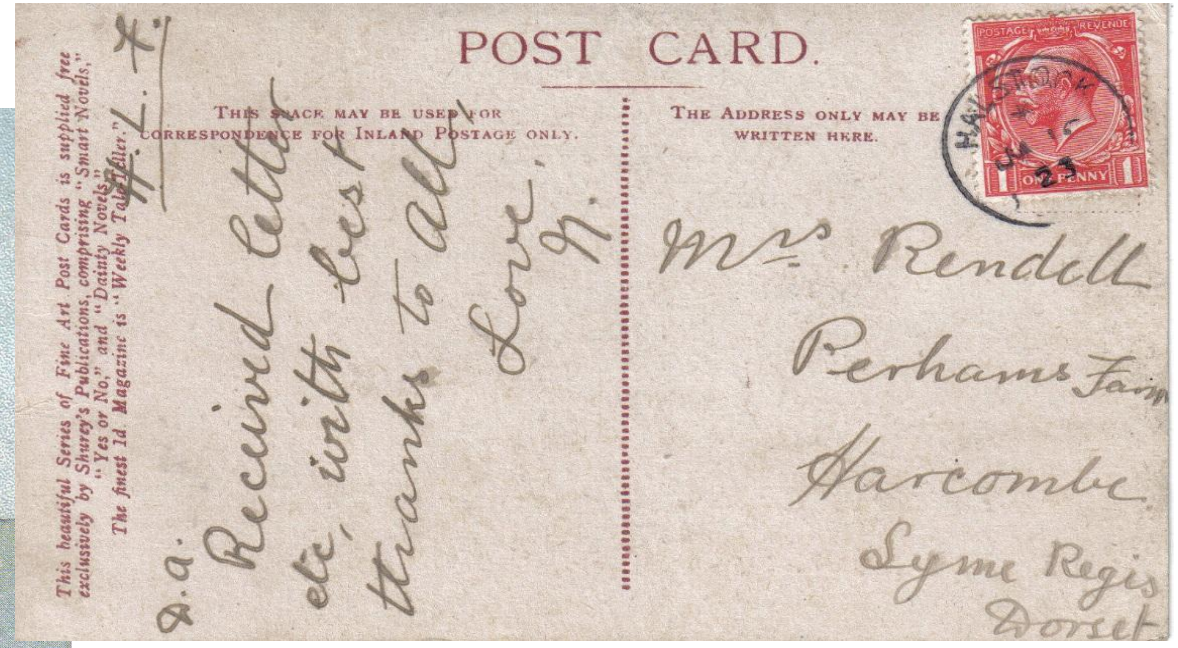
Recent contact with former pupils has given the team an insight into the school at Rhode Hill. In the 1950s, the yearly intake was about 50 (16-20 years of age). The girls did all the cooking, laundry and housework. Teaching staff remembered were Misses Wood, Pelly, Percy-Jones, Gamble and Reynolds. An afternoon off each week allowed them to visit Lyme Regis.



1923

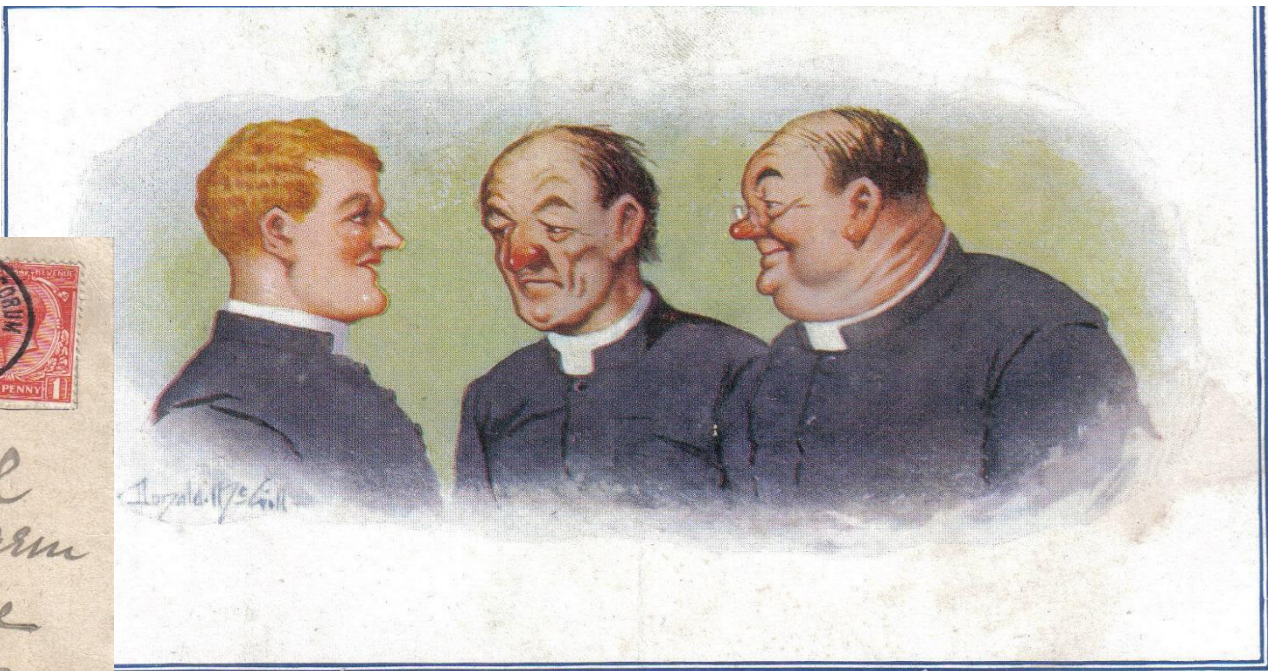
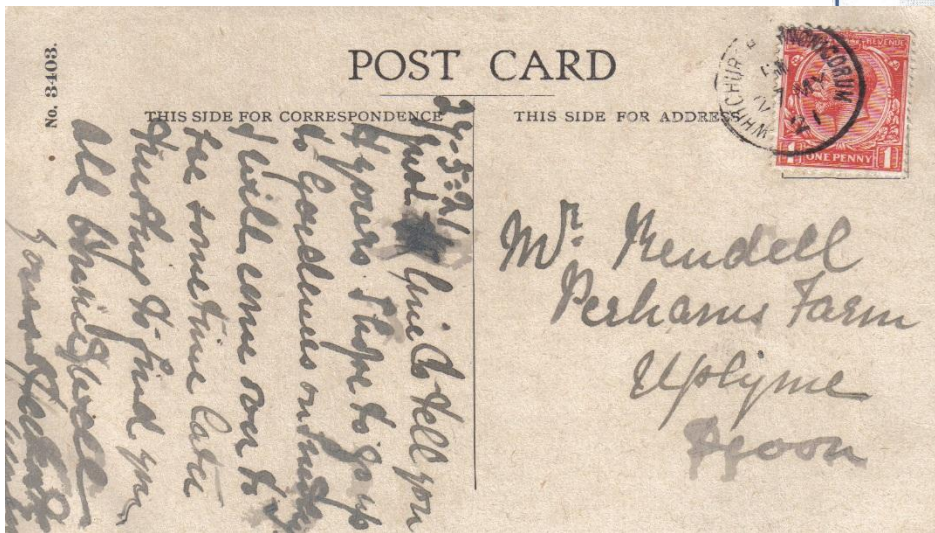


Becalmed Fishing Boat.



Postcards sent to Perhams Farm, Harcombe

1921



Parsons seldom grow whiskers because most of them only get to Heaven by a close shave!

Unveiling of War Memorial

Uplyme

The wayside cross, in memory of the 31 men of the parish who gave their lives for their King and country, was unveiled by Major-General Sir Reginald Pinney, who announced that the names would be added shortly. After giving the names, with the regiments to which the men belonged, the Rector (the Rev. E. Bramwell) dedicated the cross. Silence was observed for a short space, and then the "Last Post" was sounded. Hymns 165 and 166 were sung by the surpliced choir and the large company of spectators, after which the Rector pronounced the Blessing. Many handsome wreaths were placed at the foot of the cross by the relatives of the fallen heroes.

Exeter & Plymouth Gazette, July 9, 1920



Uplyme & Lyme Regis Horticultural Society

Looking back at its origins

Horticultural and Cottagers' Improvement Society

*This society, which as yet in its infancy, has been established for the parishes of Lyme, **UPLYME**, Charmouth, Wooton and Monkton Wylde, having for its main objects the encouragement of horticultural pursuits amongst the poor, and the general improvement of the cottager. By holding out the reward of industry and successful competition, and thereby supplying a further stimulus to the inert energies of the poorer classes, the Society has endeavoured to attend to and improve the ordinary advantages which the pursuits of gardening and general habits of industry always confer. The first exhibition took place on Thursday last in the Assembly Rooms [Lyme Regis] It must be observed that the exhibitions are not exclusively intended for the cottagers, but amateurs, gentlemen's gardeners and professional gardeners also compete, though of course their productions are not permitted to be placed in competition with the humbler effects of the poor*

Sherborne Mercury, July 16, 1850

*The annual Flower Show and Exhibition of the Lyme Regis, **UPLYME**, Charmouth, Wotton, Monkton Wylde and Rousdon Horticultural Society was held on Wednesday, under very auspicious circumstances, on the grounds of the Rev. Dr. Hodges, at the Lyme Regis Vicarage*

Somerset County Gazette, August 17, 1878

A severe loss has been suffered by the death, in Lyme Regis Cottage Hospital, on Sunday, of Captain Francis James Francillon, of Harcombe House He was a keen naturalist and horticulturalist. His bird life photography was much admired, and at the annual show of **UPLYME**, Lyme Regis & District Horticultural Society, of which he was chairman, he won the Woodroffe Cup ...

Exeter & Plymouth Gazette, August 28, 1936

*Large numbers of people visited the grounds of the Hotel Alexandra, Lyme Regis, yesterday, on the occasion of the second annual exhibition in connexion with the Lyme Regis Horticultural Society, with which **UPLYME** is affiliated The number of entries this year is about 50 in excess of last year, being 530. The increase was chiefly in the cottagers' classes, those for onions, eschalots, marrows and scarlet runner beans being very good*

Devon & Exeter Gazette,
August 28, 1902

St Peter and St Paul The Parish Church of Uplyme

Graham Davies 2015



John Marriage 2009